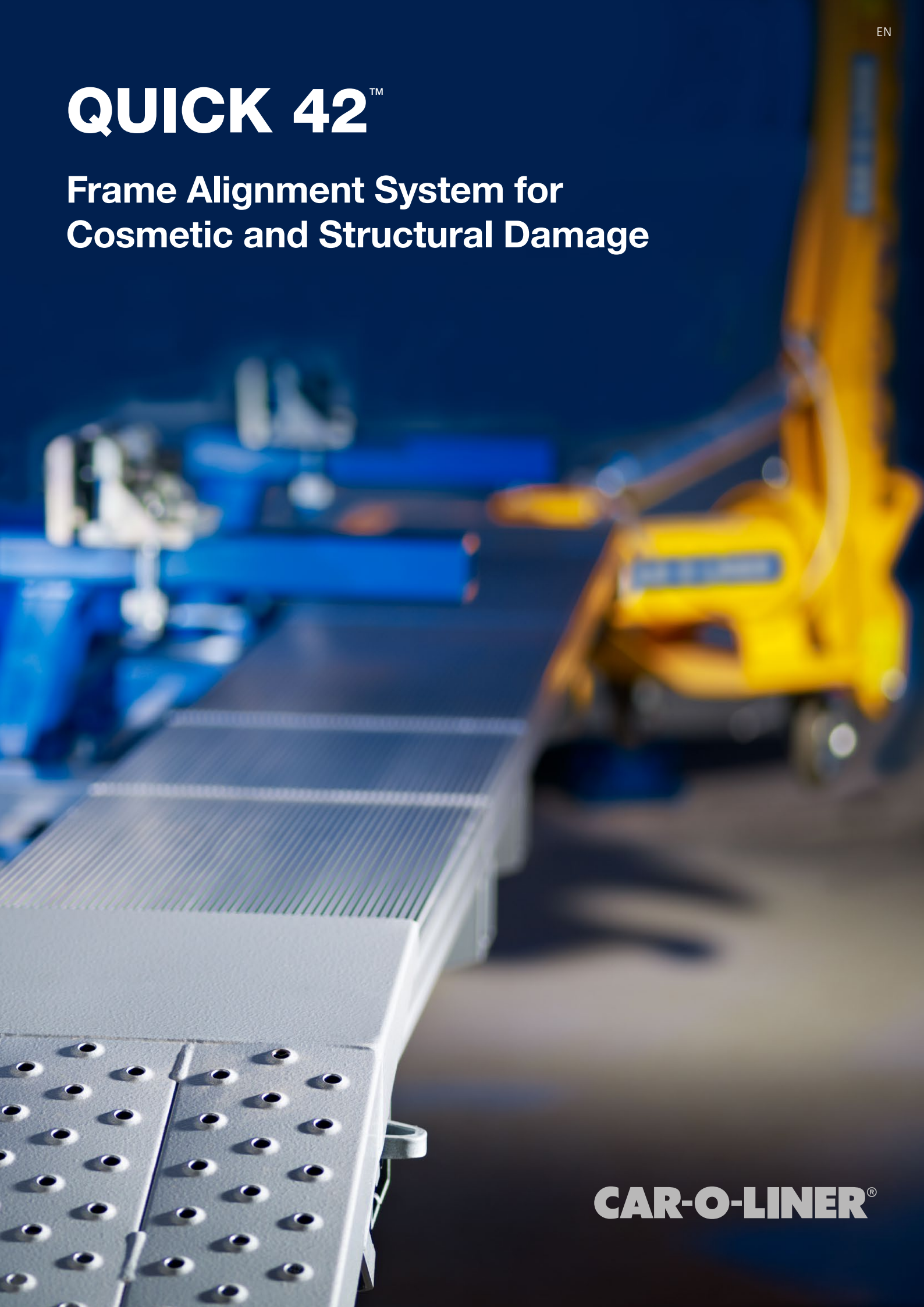


QUICK 42™

Frame Alignment System for
Cosmetic and Structural Damage



Quick Benefits for Your Bottom Line

Designed for Cosmetic and Structural Repairs

Quick 42 is a phenomenal, multi-functional bench designed to manage every type of damage productively and accurately. It provides easy access for cosmetic repairs and offers the ability for anchoring on the same platform if structural repairs are needed, thus shortening repair cycle times and resulting in a 'quick' solution to increase shop profitability.

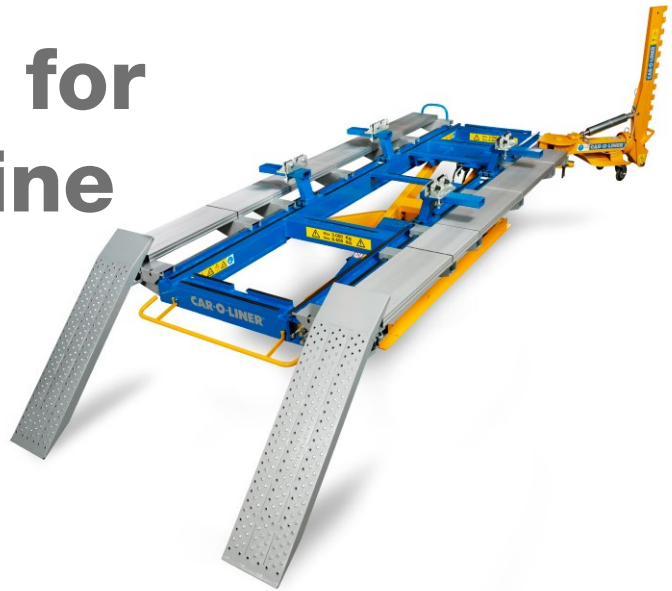
Maximize Output

Compatible with the Car-O-Tronic Vision2 **X3** measuring system and EVO™ Universal Anchoring and Holding System, the Quick42 alignment bench system offers a complete repair solution, providing technicians a timesaving process to easily diagnose, fixture, and repair automobiles to their pre-accident condition. Maximizing repair capabilities and quality enhances bodyshop output and increases customer satisfaction.



Speed up the repair process

Fast set-up, easy access, on-wheels measuring, quick anchoring and adjustable working height are features that measurably decrease repair time. Cosmetic repairs can be made while the vehicle is still on its wheels. And if structural damage is discovered, the repairs can begin immediately without changing benches — that's efficiency!



Features and Benefits

- **Universal set-up** — reduces time, cost and space
- **Integrated power unit** — increase safety by keeping the floor clear of hydraulic and air lines
- **Lightweight, removable ramps** — for easy vehicle access
- **Powerful 10-ton draw aligner** — with multi-angle pulling and 360° access allows the technician to access the vehicle from just about anywhere
- **Compatible with EVO 1, 2 & 3** and the Car-O-Tronic electronic measuring systems giving you a total solution for all collision repairs
- **Flexible installation** — fixed, mobile or pit mountings makes it easy to fit into any workshop
- **OEM Approved** — meets most OEM equipment requirements further increasing your workshop's offering and your profits

Premium Quality for Exceptional Benefits



In order to achieve premium quality, Car-O-Liner's R&D department worked closely with original equipment manufacturers when creating the Quick 42. We wanted to develop a bench that met their requirements now and in the future. For us, and our OEMs, premium quality means more than just the engineering standard of the product or the choice of materials and design, it is also about the system's value.

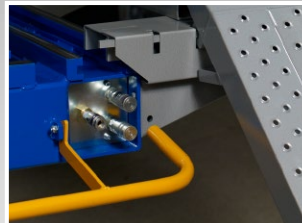
Quick 42 is loaded with value-giving features that make the work process easier, faster, more accurate and, quite simply, better – functions that offer premium quality.



Quick and efficient — diagnosis of structural damage while the vehicle is supported on its wheels or in a clamped position



Secure clamping — the best grip — no clamping slip. Q63 adjustable bench mountings allow pull while the vehicle is supported on its wheels.



Integrated — multi-functional power unit for hydraulics, lift, pulling towers and air tools



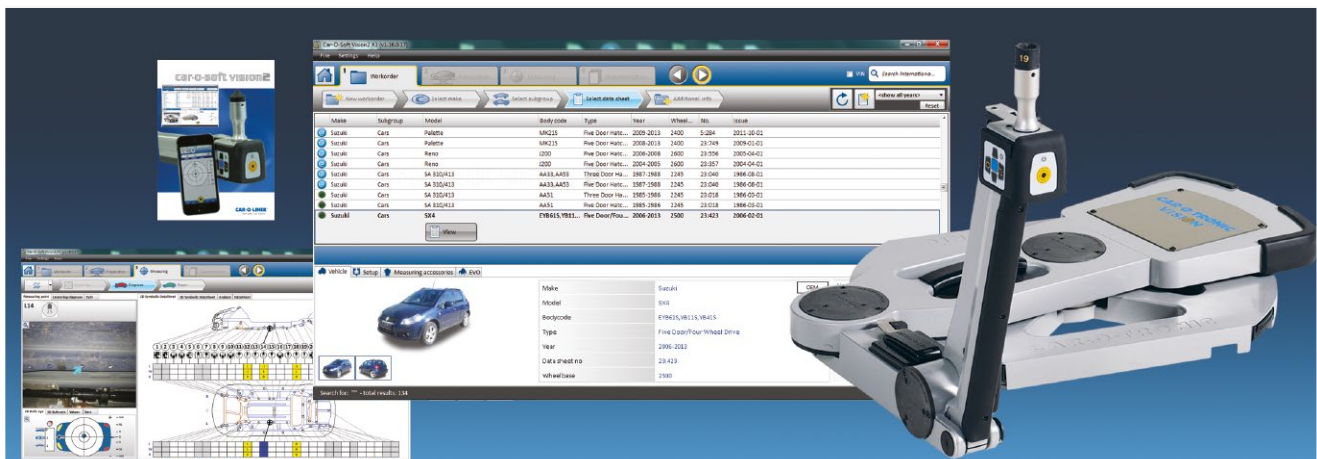
User-friendly control — with all-in-one functions for automatic bench tilting, lifting, 10-ton pulling and hydraulic jacking



Efficient vehicle mounting — with hydraulic jacks



Easy access — lightweight, multi-purpose ramps allow quick and easy access to damaged parts, anchoring points and upper body



Precise information — with accurate, real-time measuring throughout the process when used with the Car-O-Tronic Vision Measuring System and Car-O-Data, the world's leading database providing information from diagnosis to final documentation

Maximize the benefits of Quick 42

Hold on to more business

Support the entire vehicle repair process when you integrate Quick42 with other Car-O-Liner product solutions. By adding any one of Car-O-Liner's EVO Systems for anchoring and holding you get a flexible, universal system with few components – but many possibilities.

Car-O-Liner Truck Clamping kits are another ideal companion to the Quick42. Truck clamps have set industry standards for full-frame repairs, allowing you to anchor and repair any full-frame compact truck, van and SUV on the market – with holding power that far exceeds pulling requirements.



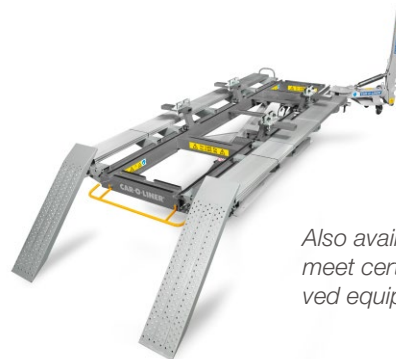
Add to the Quick42 one of the Car-O-Tronic measuring systems and you'll get precise vehicle analysis with real-time measurements during the entire process.

With the Quick42, EVO, Car-O-Tronic and Truck Clamping, you'll have the best solution for rapid results and premium quality – from diagnosis and repair to final check and documentation.

Technical Data

Lifting Platform	
Dimensions LxW	4200 x 1110 mm
with draw aligner	5320 x 2230 mm
Min/Max height	480 - 1480 mm
Work Area Size (draw aligner on both sides)	3550 mm
Loading angle	Bench 3,5° Driving ramps 12°
Automatic tilt function	Yes
Mobile capability	Yes
Maximum lift height in ground	1000 mm
Milled surface for measuring	Yes
Hydraulics	
Pulling force (per draw aligner)	10 tons
Lift capacity (max vehicle weight)	3000 kg
Lift capacity in ground (max vehicle weight)	3000 kg
360° Pulling capacity	Yes

Power 3Ph, 50Hz, 200/230/400V
1Ph, 60Hz, 110/220V



Also available in grey to meet certain OEM approved equipment standards

Car-O-Liner is recognized for its leadership in the marketplace by continuously delivering high quality products and exceptional customer service.



car-o-liner.com



CAR-O-LINER®

Car-O-Liner Hulda Mellgrens gata 1 SE-421 32 Västra Frölunda, SWEDEN
Telephone +46 721 1050 www.car-o-liner.com Info@car-o-liner.se