



## ROLLER BRAKE TESTERS FOR ALL VEHICLE CLASSES



**The MAHA modular system – the individual tester from the series  
From brake tester to test lane**

- ♦ Fully automatic testing with user guidance
- ♦ Digital data acquisition and storage
- ♦ From Classic to 4WD: modular design
- ♦ Patented, correct 4WD testing
- ♦ Robust, service-friendly technology
- ♦ Network ready – ASA network, GIEGNET, MCTC, ...

# THE MAHA MODULAR SYSTEM

THE INDIVIDUAL TESTER FROM THE SERIES

From brake tester to test lane

SERIES	SCOPE OF APPLICATION	PAGE
MBT 3000 series	Cars, vans and light trucks	4
MBT 4000 series	Cars, vans, light trucks and trucks	6
MBT 5000 series	Vans, light trucks and trucks (e.g. for mobile roadside inspections)	8
MBT 6000 series	Agricultural and special vehicles	10
MBT 7000 series	Cars, vans, light trucks and trucks	12
Accessories matrix		14
Accessories		15
Planning examples		16

MBT series displays and controls – individual solutions for the most demanding requirements



## "MCD 2000" communication desk

Display and PC control unit with comfortable guided function and extensive databases for professional use.

## "Classic" and "Competence" multiple analog displays

Clear display of measured values on pointer instruments that are easy to read. The (2-way) "Classic display" and the (4-way) "Competence display" with VARIODATA digital displays can also be equipped to display additional measured values such as axle load, brake pressure, deceleration, braking force and pedal force, as well as to include user guidance.

- ① Lockable drawer for keyboard and PC mouse
- ② Integrated switch cabinet for tester control
- ③ Option: Side shelf for additional equipment

- ④ Digital/optical differential display
- ⑤ VARIODATA extension module 1 – 4
- ⑥ Option: Ticker text

## MBT 3000 Series

Thanks to an authorized traversable axle load of 8 t, the MBT 3000 series roller brake testers are especially suitable for testing light trucks, vans and motorized caravans. The compact design of the roller set ensures easy installation with no need for extensive preparations or an installation pit. The display design can be either analog or a digital version with a PC. Even the basic version provides the ability to expand to a complete test lane with shock absorber tester and side slip tester.

## MBT 4000 Series

MBT 4000 series testers stand out thanks to their high flexibility in terms of potential applications. The roller set dimensions offer the best testing capabilities for standard cars and trucks. The separated roller set design is particularly suitable for assembly using an installation pit. The display design can be either analog or a digital version with a PC and can be extended to include a test lane.

## MBT 5000 Series

Testers for "mobile roadside inspection" in particular have been developed in the MBT 5000 series. The low minimum height means that these testers are mobile and flexible, and can be used without installation pit preparations. The display design can be either analog or a digital version with a PC.

## MBT 6000 Series

Appropriate test equipment is required for testing the brakes of vehicles with large wheel dimensions and variable track widths. The MBT 6000 testers have been specially developed to meet these requirements and are characterized by their unique dimensions. They can be used for agricultural vehicles or special vehicles of any kind. MBT 6000 series testers offer (almost) limitless options. The display design can be either analog or a digital version with a PC.

## MBT 7000 Series

Recommended by vehicle manufacturers and used by international testing organizations in continuous operation. MBT 7000 series testers are the world's most commonly used brake testers and are used for truck diagnostics in particular. The optimized roller set dimensions make these benches versatile for both truck and car testing. These test benches can be upgraded with many accessories and offer a wide range of diagnostics options, even when vehicle throughput is high. The display design can be either analog or a digital version with a PC and can be extended to include a test lane.



# MBT 3000 SERIES

Thanks to an authorized traversable axle load of 8 t, the MBT 3000 series roller brake testers are especially suitable for testing light trucks, vans and motorized caravans. The compact design of the roller sets ensures easy installation with no need for extensive preparations or an installation pit. The display design can be either analog or a digital version with a PC. Even the basic version provides the ability to expand to a complete test lane with shock absorber tester and side slip tester.



Example illustration: MBT 3200 LON

## Description

- ♦ Automatic start-up monitoring
- ♦ Delayed automatic switch-on after entering the tester
- ♦ Automatic cutoff at selected slip with pointer stop and automatic restart
- ♦ Automatic switch-off after exiting the tester
- ♦ Single wheel switchover
- ♦ Electronic DMS measuring system
- ♦ Self-supporting, enclosed roller set
- ♦ Welded roller surface (plastic coated on request)
- ♦ Star-delta switching
- ♦ Lockable main switch
- ♦ TUV approved
- ♦ Corrosion protection: Powder coating
- ♦ **With 3200 LON and 3200 with optional 4WD regulation set:**  
Multiple analog display with two analog index clocks (diameter 2 x 350 mm) and integrated switching and electrical cabinet. Display option for brake tester, side slip tester and shock absorber tester.  
Differential (LED bar) display for assessing braking force imbalance, shock absorber imbalance and side slip deviation.
- ♦ **With 3250 EUROSISTEM and 3250 with optional 4WD regulation set:**  
Communication desk or switch cabinet for tester control, lockable drawer for keyboard and computer mouse, storage compartment for writing accessories, etc. The monitor support is set up pursuant to the VESA standard. Measured value, differential display and graphics on a PC monitor (optional).



**Multiple analog display**  
Clear display on pointer instruments that are easy to read.

	MBT 3200 LON	MBT 3250 EUROSYSYSTEM
Multiple analog display	X	O
MCD 2000 communication desk	O	X
Test software LON Basic	O	-
EUROSYSYSTEM test software	-	X
4WD regulation set	O	O

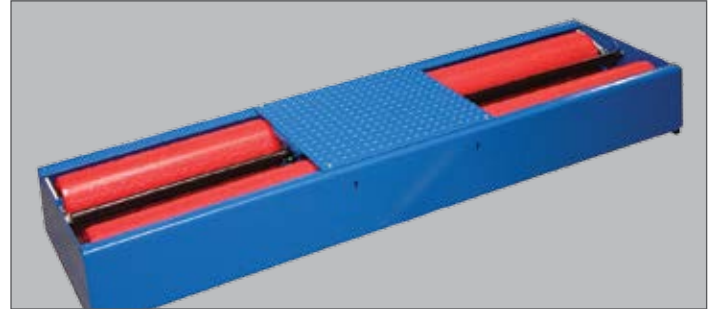
The current price list gives details of other accessories.

X: These are included in the delivery scope      O: Optionally available      -: Not available



**MCD 2000 communication desk**  
Display and PC control unit with comfortable guided function and extensive databases for professional use.

**MBT 3000 series roller set** with preparation for weighing device  
- Axle load 8 t  
- Motor rating 5.5 kW



## TECHNICAL DATA

### DISPLAY/CONTROL

	LON	EUROSYSYSTEM / EUROSYSYSTEM 4WD
Display unit	Multiple analog display Ø 2 x 350 mm	PC monitor and/or radio touchscreen FTS 2018
Control	Integrated control circuit board	Fully automatic thanks to the MCD communication desk
Display area	0 – 16 kN	0 – 16 kN
Display unit dimensions (H x D x W)	910 x 300 x 870 mm	1230 x 350 x 860 mm (without printer compartment)
Weight	approx. 60 – 100 kg	approx. 100 – 120 kg
Interface connector	RS 232 for printer or PC	Ethernet network

### ROLLER SET

	MBT 3000 SERIES
Authorized axle load (minimum height)	8.0 t
Drive power of motors	2 x 5.5 kW
Test speed	5 km/h
Minimal/maximal scan	870 / 2800 mm
Roller diameter	202 mm
Roller center distance	400 mm
Electrical connection value	3 x 400V/N/PE 50/60 Hz
Fuse protection	35 A time-delay
Bearing	watertight, maintenance-free
Corrosion protection	powder coating (optionally hot-dip galvanised)
Roller set dimensions (H x D x W)	280 x 680 x 2925 mm
Packaging dimensions (H x D x W)	400 x 800 x 3000 mm
Weight including packaging	approx. 500 kg

### OPTIONS

Radio pressure transducer, pneumatic	0 – 20 bar
Radio pressure transducer, hydraulic	0 – 160 bar
Weighing device	0 – 8 t

\* Option

# MBT 4000 SERIES

MBT 4000 series testers stand out thanks to their high flexibility in terms of potential applications. The roller set dimensions offer the best testing capabilities for standard cars and trucks. The separated roller set design is particularly suitable for assembly using an installation pit. The display design can be either analog or a digital version with a PC and can be extended to include a test lane.



Example illustration: MBT 4200 LON W CLASSIC

## Description

- ♦ Automatic start-up monitoring
- ♦ Delayed automatic switch-on after entering the tester
- ♦ Automatic cutoff at selected slip with pointer stop and automatic restart
- ♦ Automatic switch-off after exiting the tester
- ♦ Single wheel switchover
- ♦ Electronic DMS measuring system
- ♦ Self-supporting split roller set
- ♦ Rear roller banked by 40 mm
- ♦ Welded roller surface (plastic coated on request)
- ♦ Star-delta switching
- ♦ Splash-proof motors
- ♦ TUV approved
- ♦ Lockable main switch
- ♦ RS 232 interface connector
- ♦ Corrosion protection: Powder coating
- ♦ **With 4200 LON and 4200 with optional 4WD regulation set:**
  - Multiple analog display analog display with two (CLASSIC) or four (4WD, COMPETENCE) index clocks. (Diameter 2 or 4 x 350 mm) and integrated switching and electrical cabinet.
  - Display option for brake tester, side slip tester and shock absorber tester.
  - (3-digit) differential display for assessing braking force imbalance, shock absorber imbalance and side slip deviation.
- ♦ **With 4250 LON and 4250 with optional 4WD regulation set:**
  - Communication desk or switch cabinet for tester control, lockable drawer for keyboard and computer mouse, storage compartment for writing accessories, etc. The monitor support is set up pursuant to the VESA standard. Measured value, differential display and graphics on a PC monitor (optional).



### Multiple analog display

Clear presentation on clearly readable dial instruments, combined with VARIODATA digital displays and (moving text) user interface.



	MBT 4200 LON W CLASSIC	MBT 4200 LON W COMPETENCE	MBT 4250 EUROSYSYSTEM
2- way multiple analog display	X	–	O
4- way multiple analog display	–	X	O
Preparation for weighing device	X	X	X
MCD 2000 communication desk	O	O	X
LON-Basic test software	O	O	–
EUROSYSYSTEM test software	–	–	X
4WD regulation set	O	O	O

The current price list gives details of other accessories.

X These are included in the delivery scope

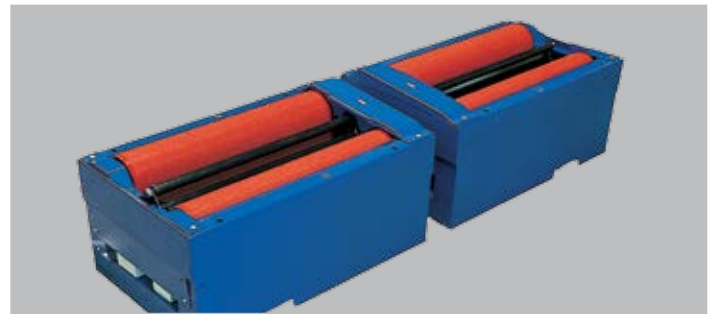
O: Optionally available

–: Not available



← **MCD 2000 communication desk**  
Display and PC control unit with comfortable guided function and extensive databases for professional use.

**MBT 4000 series roller set** with no preparation for weighing device  
- Axle load 13 t (loads of up to 15 t)  
- Motor rating from 9 kW to 11 kW  
- Rear roller banked by 40 mm



## TECHNICAL DATA

### DISPLAY/CONTROL

Display unit
Control
Display area
Display unit dimensions (H x D x W)
Weight
Interface connector

### LON/LON 4WD

Multiple analog display 2 x Ø 350 mm (CLASSIC) or 4 x Ø 350 mm (COMPETENCE)
Integrated control circuit board
0 – 40 kN
910 x 870 x 300 mm (CLASSIC) or 1060 x 870 x 300 mm (COMPETENCE)
approx. 60 – 100 kg
RS 232 for printer or PC

### EUROSYSYSTEM/EUROSYSYSTEM 4WD

PC monitor and/or radio touchscreen FTS 2018
Fully automatic thanks to the MCD communication desk
0 – 40 kN
860 x 1230 x 350 mm (without printer compartment)
approx. 100 – 120 kg
Ethernet network

### ROLLER SET

Authorized axle load (minimum height)
Drive power of motors
Test speed
Roller length
Roller diameter
Roller center distance
Electrical connection value
Fuse protection
Bearing
Corrosion protection
Roller set half dimensions (H x D x W)
Weight (2 parts)

### MBT 4000 SERIES

13 t / 15 t*
2 x 9 kW / 11 kW*
2.3 km/h (2.3 / 4.6 km/h)*
1000 mm
202 mm
430 mm
3 x 400 V/N/PE 50/60 Hz
50 – 63 A time-delay
watertight, maintenance-free
powder coating (optionally hot-dip galvanised)
550 x 1050 x 1250 mm
approx. 1200 kg

### OPTIONS

Radio pressure transducer, pneumatic
Radio pressure transducer, hydraulic
Hydraulic weight simulator
Weighing device

0 – 20 bar
0 – 160 bar
0 – 10 t
0 – 20 t

\* Option

# MBT 5000 SERIES

Testers for "mobile roadside inspection" in particular have been developed in the MBT 5000 series. The low minimum height means that these testers are mobile and flexible, and can be used without installation pit preparations. The display design can be either analog or a digital version with a PC.



Example illustration: MBT 5000 series

## Description

- ♦ Automatic start-up monitoring
- ♦ Delayed automatic switch-on after entering the tester
- ♦ Automatic cutoff at selected slip with pointer stop and automatic restart
- ♦ Automatic switch-off after exiting the tester
- ♦ Single wheel switchover
- ♦ Electronic DMS measuring system
- ♦ Self-supporting split roller set
- ♦ Central covering between the roller sets for the MBT 5000 series
- ♦ Plastic-coated roller surface
- ♦ Star-delta switching
- ♦ Lockable main switch
- ♦ RS 232 interface connector
- ♦ Corrosion protection: Powder coating
- ♦ **With 5200 LON version:**  
Multiple analog display analog display with two (CLASSIC) or four (4WD, COMPETENCE) index clocks. (Diameter 2 or 4 x 350 mm) and integrated switching and electrical cabinet. Display option for brake tester, side slip tester and shock absorber tester. (3-digit) differential display for assessing braking force imbalance, shock absorber imbalance and side slip deviation.
- ♦ **With 5250 EUROSISTEM version:**  
Communication desk or switch cabinet for tester control, lockable drawer for keyboard and computer mouse, storage compartment for writing accessories, etc. The monitor support is set up pursuant to the VESA standard. Measured value, differential display and graphics on a PC monitor (optional).



### Multiple analog display

Clear presentation on clearly readable dial instruments, combined with VARIODATA digital displays and (moving text) user interface.



## MBT 5250 EUROSYSYSTEM

2- way multiple analog display	O
4- way multiple analog display	O
Preparation for weighing device	X
MCD 2000 communication desk	X
LON-Basic test software	-
EUROSYSYSTEM test software	X
Ramp set	O

The current price list gives details of other accessories.

X These are included in the delivery scope

O: Optionally available

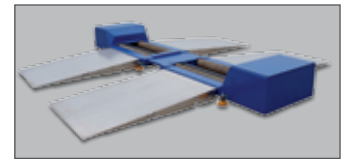
–: Not available



**MCD 2000 communication desk**  
 ← Display and PC control unit with comfortable guided function and extensive databases for professional use.

### Minimum height

The compact roller set design ensures trouble-free testing, even of vehicles that have limited ground clearance. →



### Mobile use

Electrical and mechanical plug connections mean that the tester is fully prepared for mobile use.

## TECHNICAL DATA

### DISPLAY/CONTROL

Display unit	PC monitor and/or radio touchscreen FTS 2018
Control	Fully automatic thanks to the MCD communication desk
Display area	0 – 40 kN
Display unit dimensions (H x D x W)	860 x 1230 x 350 mm (without printer compartment)
Weight	approx. 80 – 100 kg
Interface connector	Ethernet network

### ROLLER SET

Authorized axle load (minimum height)	18 t
Drive power of motors	2 x 11 kW
Test speed	2.3 km/h
Electrical connection value/fuse protection	3 x 400 V 50 Hz / 63 A time-delay
Roller diameter	152 mm
Minimal/maximal scan	600 / 3000 mm
Roller length	1200 mm
Roller center distance	450 mm
Minimum height	170 mm
Bearing	watertight, maintenance-free
Corrosion protection	powder coating (optionally hot-dip galvanised)
Roller set half dimensions (H x D x W)	460 x 1200 x 2050 mm
Weight (2 parts)	approx. 1600 kg

### OPTIONS

Radio pressure transducer, pneumatic	0 – 20 bar
Radio pressure transducer, hydraulic	0 – 160 bar
Weighing device	0 – 20 t

\* Option

# MBT 6000 SERIES

Appropriate test equipment is required for testing the brakes of vehicles with large wheel dimensions and variable track widths. The MBT 6000 testers have been specially developed to meet these requirements and are characterized by their unique dimensions. They can be used for agricultural vehicles or special vehicles of any kind. MBT 6000 series testers offer (almost) limitless options. The display design can be either analog or a digital version with a PC.



Example illustration: MBT 6000 series

## Description

- ♦ Automatic start-up monitoring
- ♦ Delayed automatic switch-on after entering the tester
- ♦ Automatic cutoff at selected slip with pointer stop and automatic restart
- ♦ Automatic switch-off after exiting the tester
- ♦ Single wheel switchover
- ♦ Electronic DMS measuring system
- ♦ DC brake (electric drive-off aid)
- ♦ Self-supporting split roller set
- ♦ Rear roller banked by 50 mm
- ♦ Welded roller surface (plastic coated on request)
- ♦ Star-delta switching
- ♦ Splash-proof motors
- ♦ TUV approved
- ♦ Lockable main switch
- ♦ RS 232 interface connector
- ♦ Corrosion protection: Powder coating
- ♦ **With 6200 LON version:**  
Multiple analog display with two analog index clocks (diameter 2 x 350 mm) and integrated switching and electrical cabinet. Display option for brake tester, side slip tester and shock absorber tester.  
(3-digit) differential display for assessing braking force imbalance, shock absorber imbalance and side slip deviation.
- ♦ **With 6250 EUROSISTEM version:**  
Communication desk or switch cabinet for tester control, lockable drawer for keyboard and computer mouse, storage compartment for writing accessories, etc. The monitor support is set up pursuant to the VESA standard. Measured value, differential display and graphics on a PC monitor (optional).



### Multiple analog display

Clear presentation on clearly readable dial instruments, combined with VARIODATA digital displays and (moving text) user interface.

## MBT 6200 LON W CLASSIC

## MBT 6250 EUROSYSTEM

2- way multiple analog display	X	O
Preparation for weighing device	X	X
MCD 2000 communication desk	O	X
LON-Basic test software	O	-
EUROSYSTEM test software	-	X
Ramp set	O	O

The current price list gives details of other accessories.

X These are included in the delivery scope

O: Optionally available

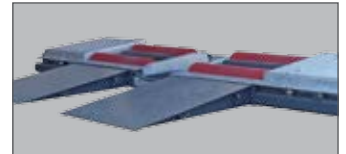
-: Not available



← **MCD 2000 communication desk**  
Display and PC control unit with comfortable guided function and extensive databases for professional use.

### Roller set design

The adapted design ensures that wheel diameters of up to 2.2 m can be tested easily. →



### Flexible use

Installation can be either on the ground or in an existing foundation.

## TECHNICAL DATA

### DISPLAY/CONTROL

Display unit	Multiple analog display 2 x Ø 350 mm	PC monitor and/or radio touchscreen FTS 2018
Control	Integrated control circuit board	Fully automatic thanks to the MCD communication desk
Display area	0 – 40 kN	0 – 40 kN
Display unit dimensions (H x D x W)	910 x 870 x 300 mm	860 x 1230 x 350 mm (without printer compartment)
Weight	approx. 60 – 100 kg	approx. 100 – 120 kg
Interface connector	RS 232 for printer or PC	Ethernet network

### ROLLER SET

Authorized axle load (minimum height)	18 t
Drive power of motors	2 x 11 kW
Test speed	3 km/h
Testable wheel diameter	800 – 2200 mm
Minimal/maximal scan	400/3600 mm
Roller length	1600 mm
Roller diameter	265 mm
Roller center distance	685 mm
Electrical connection value	3 x 400V/N/PE 50 Hz
Fuse protection	63 A time-delay
Bearing	watertight, maintenance-free
Corrosion protection	powder coating (optionally hot-dip galvanised)
Roller set half dimensions (H x D x W)	400 x 1350 x 2685 mm
Weight (2 parts)	approx. 2400 kg

### OPTIONS

Radio pressure transducer, pneumatic	0 – 20 bar
Radio pressure transducer, hydraulic	0 – 160 bar
Hydraulic weight simulator	0 – 10 t
Weighing device	0 – 20 t

\* Option



# MBT 7000 SERIES

Recommended by vehicle manufacturers and used by international testing organizations in continuous operation. MBT 7000 series testers are the world's most commonly used brake testers and are used for truck diagnostics in particular. The optimized roller set dimensions make these benches versatile for both truck and car testing. These test benches can be upgraded with many accessories and offer a wide range of diagnostics options, even when vehicle throughput is high. The display design can be either analog or a digital version with a PC and can be extended to include a test lane.



Example illustration: MBT 7250 EUROSYSYSTEM

## Description

- ♦ Automatic start-up monitoring
- ♦ Delayed automatic switch-on after entering the tester
- ♦ Automatic cutoff at selected slip with pointer stop and automatic restart
- ♦ Automatic switch-off after exiting the tester
- ♦ Single wheel switchover
- ♦ Electronic DMS measuring system
- ♦ Self-supporting split roller set
- ♦ Rear roller banked by 50 mm
- ♦ Welded roller surface (plastic coated on request)
- ♦ Star-delta switching
- ♦ Splash-proof motors
- ♦ TUV approved
- ♦ Lockable main switch
- ♦ RS 232 interface connector
- ♦ Corrosion protection: Powder coating
- ♦ **With 7200 LON version:**  
Multiple analog display analog display with two (CLASSIC) or four (4WD, COMPETENCE) index clocks. (Diameter 2 or 4 x 350 mm) and integrated switching and electrical cabinet. Display option for brake tester, side slip tester and shock absorber tester. (3-digit) differential display for assessing braking force imbalance, shock absorber imbalance and side slip deviation.
- ♦ **With 7250 and 7250 with optional 4WD regulation set:**  
Communication desk or switch cabinet for tester control, lockable drawer for keyboard and computer mouse, storage compartment for writing accessories, etc. The monitor support is set up pursuant to the VESA standard. Measured value, differential display and graphics on a PC monitor (optional).

## MBT 7200 LON W CLASSIC

## MBT 7200 LON W COMPETENCE

## MBT 7250 EUROSISTEM

2- way multiple analog display	X	–	O
4- way multiple analog display	–	X	O
Preparation for weighing device	X	X	X
MCD 2000 communication desk	O	O	X
LON-Basic test software	O	O	–
EUROSISTEM test software	–	–	X
4WD regulation set	O	O	O

The current price list gives details of other accessories.

X These are included in the delivery scope

O: Optionally available

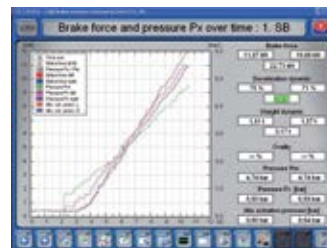
–: Not available



The input screen for vehicle and owner data can directly access the SQL database.



During the braking test, all relevant data is displayed clearly.



Clear presentation of brake values with graphical and digital analysis.



Predefined test sequences reduce the effort required to operate the equipment to a minimum.

# TECHNICAL DATA

## DISPLAY/CONTROL

Display unit	Multiple analog display 2 x Ø 350 mm (CLASSIC) or 4 x Ø 350 mm (COMPETENCE)	PC monitor and/or radio touchscreen FTS 2018
Control	Integrated control circuit board	Fully automatic thanks to the MCD communication desk
Display area	0 – 40 kN	0 – 40 kN
Display unit dimensions (H x D x W)	910 x 870 x 300 mm (CLASSIC) or 1060 x 870 x 300 mm (COMPETENCE)	860 x 1230 x 350 mm (without printer compartment)
Weight	approx. 60 – 100 kg	approx. 100 – 120 kg
Interface connector	RS 232 for printer or PC	Ethernet network

## ROLLER SET

Authorized axle load (minimum height)	18 t / 20 t*
Drive power of motors	2 x 11 kW / 16 kW*
Test speed	3 km/h (3/6 km/h)*
Roller length	1150 mm (1600 mm)*
Roller diameter	265 mm
Roller center distance	475 mm
Electrical connection value	3 x 400V/N/PE 50/60 Hz
Fuse protection	63 – 80 A time-delay
Bearing	watertight, maintenance-free
Corrosion protection	powder coating (optionally hot-dip galvanised)
Roller set dimensions (H x D x W)	700 x 1150 x 1450 mm
Weight (2 parts)	approx. 1700 kg

## OPTIONS

Radio pressure transducer, pneumatic	0 – 20 bar
Radio pressure transducer, hydraulic	0 – 160 bar
Hydraulic weight simulator	0 – 10 t
Weighing device	0 – 20 t

\* Option



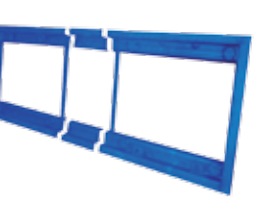

## DESCRIPTION

## ITEM NO.

\* Only in combination with simultaneous display  
The current price list gives details of other accessories.

14



				
Digital/optical differential display VZ 955252	VARIODATA display VZ 955253	Wall bracket VZ 955256	Flash light with horn VZ 955071	Stand for display cabinet VZ 955257
				
Special voltage 3 x 230 V see price list	Starter set radio-controlled pressure converter VZ 980035	Radio pressure transducer, pneumatic VZ 980029	Radio pressure transducer hydraulic VZ 980028	Radio touchscreen FTS 2018 VZ 955295
				
FFB 3 radio remote control VZ 910154	RECO 1 radio remote control VZ 910153	Pedal force meter PFM 1000 VP 990434	Thermoprint data printer VZ 910152	Plastic coated roller surface VZ 935110
				
Rotation and measurement direction VZ 935072	Operating hours counter VZ 955014	4WD regulation set VZ 990181	Hydraulic weight simulator VZ 935033	Liftable roller set VZ 935169 / VZ 935170
				
Strengthened drive motors see price list	GSQ pit support system VZ 155009	Two test speeds VZ 935077	Roller cover VZ 935140 / VZ 935141	Mounting frame see price list
				
Weighing device static/dynamic	Roller heating VZ 935006	Adjusting device VZ 975887		

## Solutions for load simulation



**MLS 2100/2200 load simulator**  
2-way HD cylinder for fixed or moving (on rails) floor mounting.



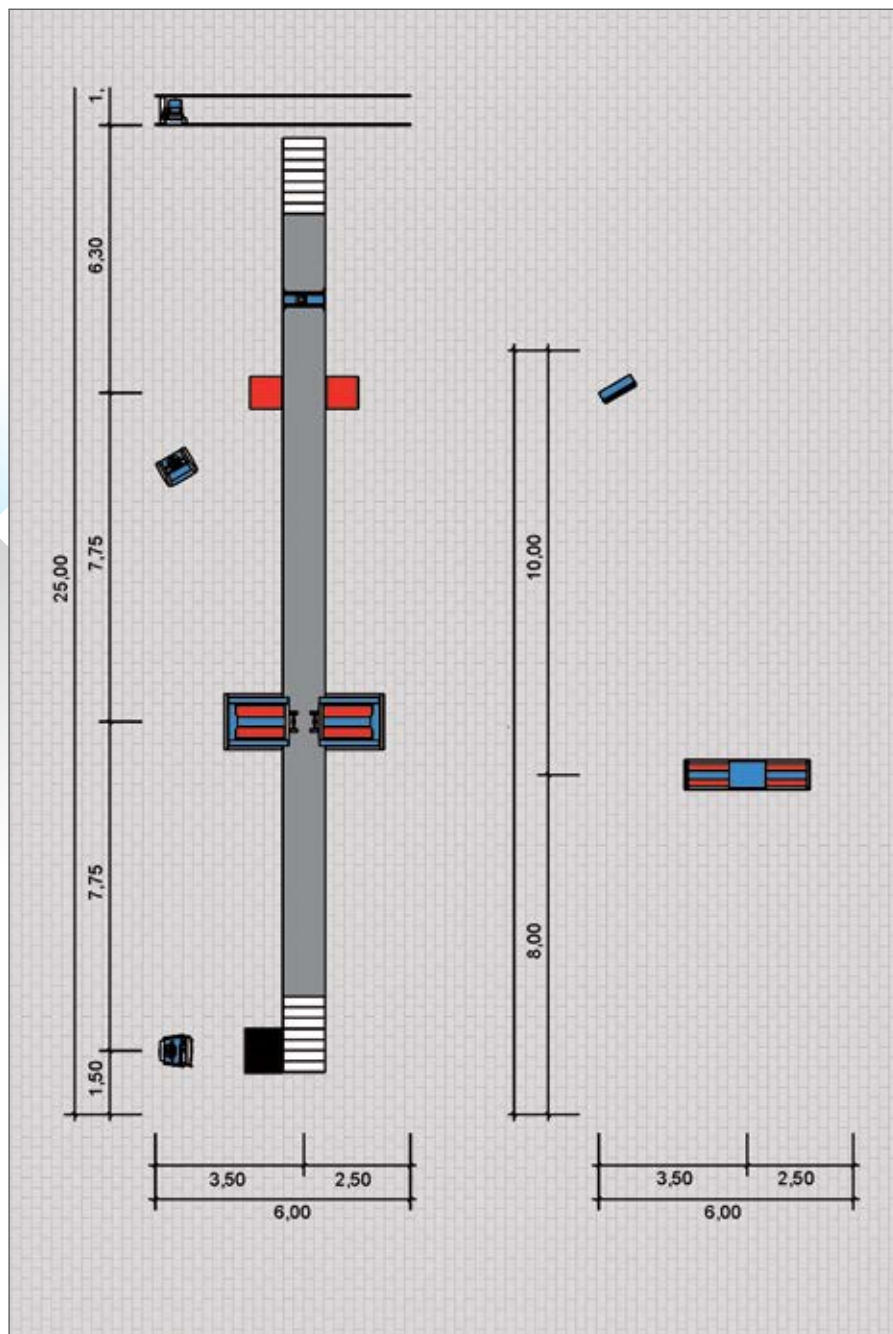
**Roller set lifting**  
Hydraulic roller set lifting for axle load displacement on the axle being tested.



**Fastening clips**  
For fastening the belt to the vehicle frame.



**Ground anchor**  
For holding the vehicle frame or the axle during lifting.



## GLOBAL PLAYER

... in more than 150 countries worldwide

### Subsidiaries

Australia  
China  
France  
India

Ireland  
Poland  
Russia  
Singapore

Spain  
South Africa  
UK  
USA

UAE  
Vietnam

**MAHA Maschinenbau Haldenwang GmbH & Co. KG**  
Hoyen 20 | 87490 Haldenwang | Germany

Phone +49 8374 585 0  
Fax +49 8374 585 497

sales@maha.de | www.maha.de